

Description

This SLC type loadcell is used to measure axial force of strut for safety and causes search of its material and is designed for crew-jack of 50ton or 100ton.

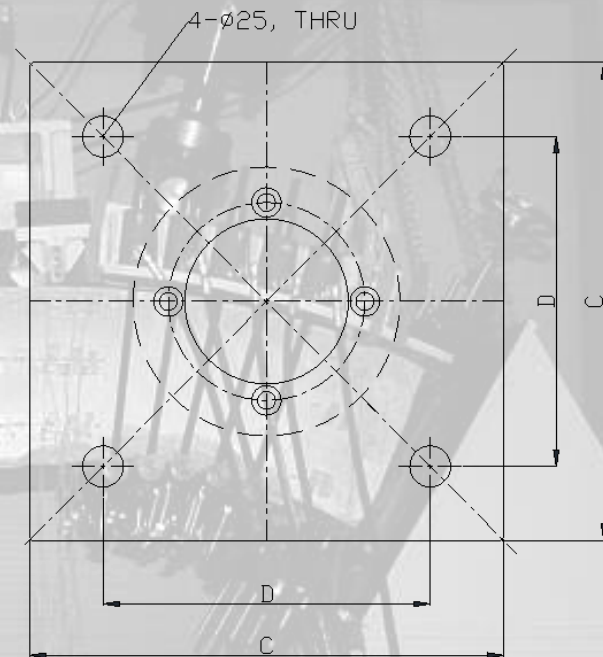
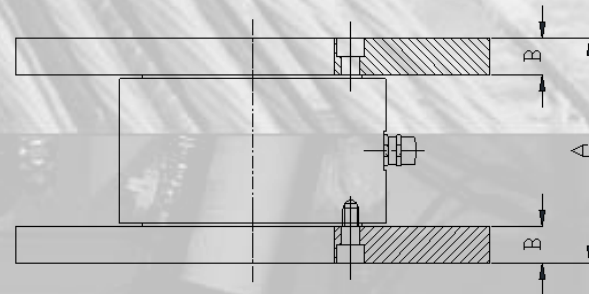
Feature

- Waterproof and dustproof
- High precision and stability by Electric resistance type
- Long measurement by strong durability and safety
- Easy installation by small size and light weight
- Easy connection with automatic measuring equipment



Specification

Type	SLC - □ □ □
Rated Capacity	100tf
Rated Output	Approx. 1mV/V ($2,000 \times 10^{-6}$)
Non-linearity	1% RO
Hysteresis	1% RO
Safe Temperature Range	-10 ~ 60°C
Over Load	1.5
Resistance	350Ω or 700 Ω
Safe Exciting Voltage	10V
Electrical Connection	4Core Shield



Dimension

Type	A	B	C	D
SLC-100	136	22	290	200