

Description

This meter is used to measure soil pressure by the around ground load for check of ground stability.

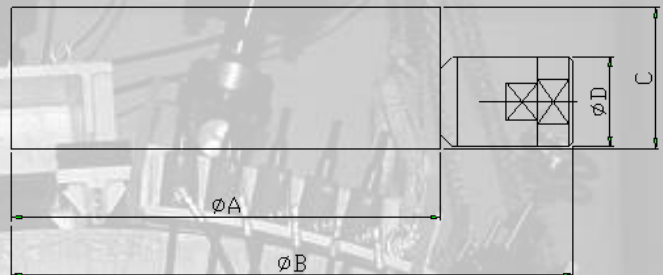
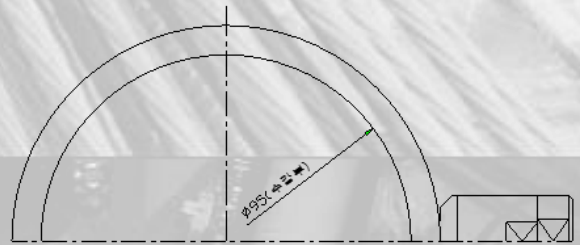
Feature

- Waterproof and dustproof
- High precision and stability by Electric resistance type
- Long measurement by strong durability and safety
- Easy installation by small size and light weight
- Easy connection with automatic measuring equipment



Specification

Type	LSP- □ □
Rated Capacity	2 ~ 20kgf/cm ²
Rated Output	Approx. 0.6~1mV/V
Non-linearity	1% RO
Hysteresis	1% RO
Safe Temperature Range	-20 ~ 60°C
Over Load	1.5
Resistance	350Ω or 700Ω
Safe Exciting Voltage	10V
Electrical Connection	4Core Shield



Dimension

Type	ØA	ØB	C	ØD
LSP-XX	110	144	36	23

