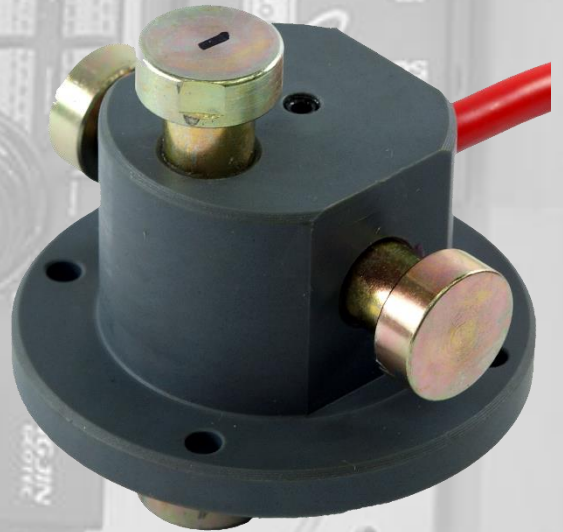


Description

VW shotcrete stress meter is installed before laying shotcrete with a sensor to measure the stress that is generated in the shotcrete at the tunnel work and also measures the compression and tensile of the tangential direction and tunnel radius direction. If necessary, anchor can be equipped at the installation

Feature

Shotcrete stress meter is equipped with stainless steel tube gauge and magnetic coil which are treated by waterproof and anti-corrosion. Shotcrete stress meter has high precise is built-in and responsiveness and reproducibility that is almost not affected by the secular change, so it is suitable for long time measurement.



Component

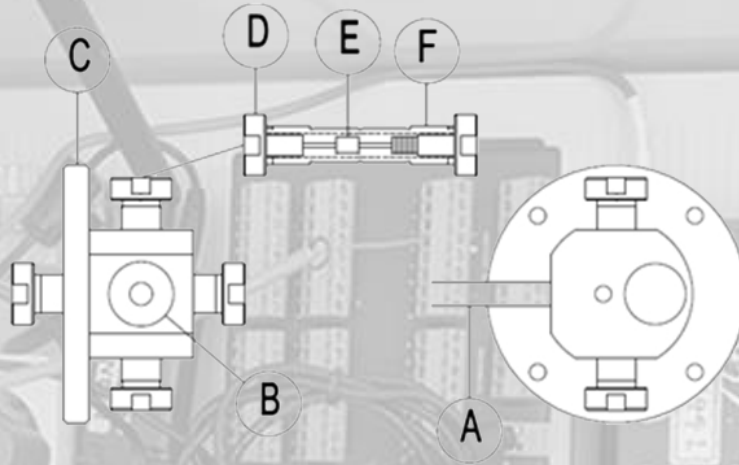
- * Shotcrete stress meter main body
- * Cable

Specification

Model	SJ-5500
Sensor	VW Type
Measurement range	1,400 ~ 3,500Hz (0 ~ 50mm)
Measurement frequency	Min 1,000 ~ Max 4,000με
Resolution	0.1με
Accuracy	9.1Kpa
Non-linearity	±0.5% FSR
Thermal expansion coefficient	11X10 ⁻⁶ / °C
Operation Temp.	-20°C ~ 50°C
Temp. sensor	NTC Thermistor (3KD-ATF)
Coil resistance	50Ω
Temp sensor working range	Thermistor : -40°C ~ 80°C
Temp sensor accuracy	Thermistor : ±1°C
Gauge length	50.8 mm
Waterproof capacity	100 m H ₂ O
Main materials	Stainless steel 300, Fluoro O-Ring, High density epoxy potting
Signal cable	O6.4mm, 0.235mm ² x 4C Shield PVC SYS cable 3m

※ The product spec is subject to change without prior notice in order to enhance the product's quality.

Dimension



A	Cable
B	Cable bush
C	Plate
D	Sensor cover
E	Sensor cover
F	Sensor housing

Model No		SJ-5500
Dimension	Plate Dia.	80mm
	Housing height	40mm
	Sensor L(T)	73mm
	Sensor L(R)	73mm
	Weight	0.18kg

