

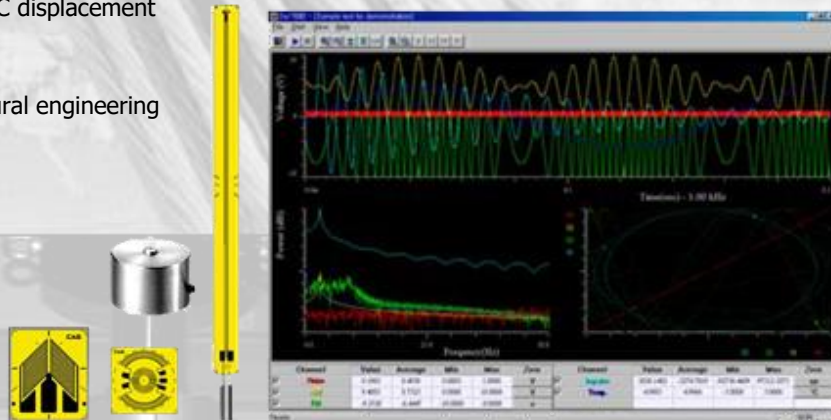
LCT^{PRO} is exclusive use for load cell, but ont only load cell but also can transfer output of voltage and current and digital(USB) of strain gauge type transducer, that is amplifier for dynamic strain gauge measurement.

Feature

- * Bridge excitation selection (DC 2 V, 5V, 10V)
- * Fully adjustable gain from 1 to 11,000
- * Selectable cut-off frequency of low-pass filters
- * Wide frequency response (10KHz, -0.3dB)
- * All bridge sensors can be used(1/4,1/2,Full Bridge)

Application

- * Dynamic measurement : Strain, Force, Pressure, DC displacement and High level voltage signal
- * Safety diagnosis of structures in civil and architectural engineering
- * Lab test equipment with various physical sensors
- * Wide frequency response (10KHz, -0.5dB)
- * PLC, Digital Indicator, Factory Automation etc.,
- * Multi Axis load cell force measurement



Specification

Channels	4 / 8 channel
Inputs	Full Bridge Transducer
	► Strain gauges :1/4, half, full(50Ω ~ 1KΩ) Foil, Piezo resistive, Potentiometer, Dcdt, Displacement transducer
Output Power	0 ~ +/-10V
Gain(1~11,000)	AC220V 60Hz
Filter	x1, x10, x100, x1000,x1 ~ x11 Fine Volume
Input Impedance	Low-pass filter, 1Hz,10Hz,100Hz,1KHz,10KHz Selectable
Transducer Excitation	≤10 ¹⁰ Ω
Zero Balance	2V,5V,10V Selectable(Remote Sense)
Span Balance	±100% (R.O)
Linearity	±10% (R.O)
Accuracy	±0.01% (F.S)
Temperature	±0.01% (F.S)
Mea. Impedance	-25 ~ +85℃, 85%
DAQ	1.7 KΩ <
	Resolution 16bit, Max Sampling rate 250ks/s